

# Augmented Sea\* 2013

Augmented Sea is a continuation of the event the summer of 2012 in the South of Sweden:

**Bioinspired Forum 2012 – Augmented\***  
*Making Sense of the Sea or the Distribution of Senses*

\*Augmented – enlarge, enhance, grow  
(adding a syllable or two to nature)

How do we tell new stories about the sea?

We will connect organizations with big data sets about the sea, companies/institutions that collect new data with media entrepreneurs. How can we support society in general to ask the right questions about the Baltic Sea and follow what is happening under the surface?

How do we set up collaborations and how do we involve creative small entrepreneurial businesses?

In early July 2013 we create a think tank during the Almedal's week in Visby, Sweden. During spring 2013 we will together with our partners initiate a dialog around a couple of challenges, see further down.

We will have three themes:

**Baltic Sea Open Data** - How do we make data about the sea accessible for variety of disciplines and target groups?

**Baltic Whisper** - How do we collect real time data in an innovative way?

**Sensors** – How can we tap into cutting edge science and develop new kinds of sensors inspired by nature?

The most important task is how we transform this data into something people can experience and take further in their specific context or field of profession. Dealing with nature there is always a dimension of representation and this can be scientific or artistic. Or, perhaps, the question is how we make our “drawings” on the landscape itself. Concepts dealing with so called Crowd Sourcing will be touched upon.

## 2013 – Test cases/Testbeds/Challenges

Hanöbukten, Sweden

Kalmar Strait, Sweden

Saltsjön, Stockholm, Sweden

Burgsviken, Gotland, Sweden

Gulf of Riga, Estonia/Latvia

Southern Harbor, Helsinki, Finland

Klaipeda Seaport, Klaipeda, Lithuania

The project is collaboration between:

Baltic Sea Action Group

Future Position X

IVL-Swedish Environmental Research Institute

Kalmar Municipality

Krinova Science Park

Marin Miljöanalys

Mobile Heights

Nobel Museum

Region Gotland

The Swedish Institute

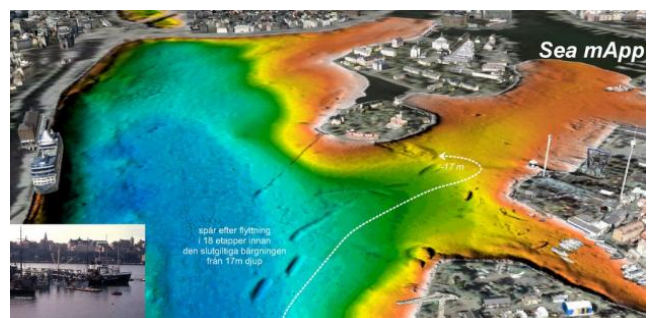
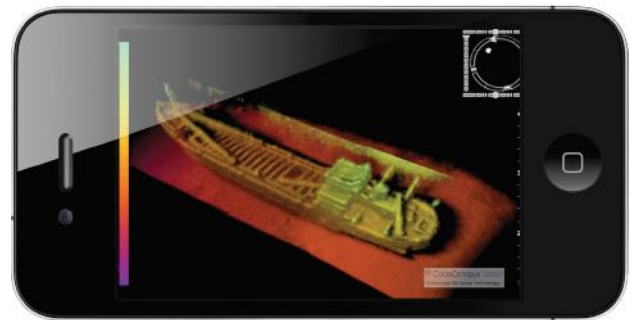
## Contact

Mats Brodén

Bioinspired Forum

[mats@bioinspiredforum.com](mailto:mats@bioinspiredforum.com)

+46 (0)70 777 3450



**BIOINSPIRED  
FORUM**